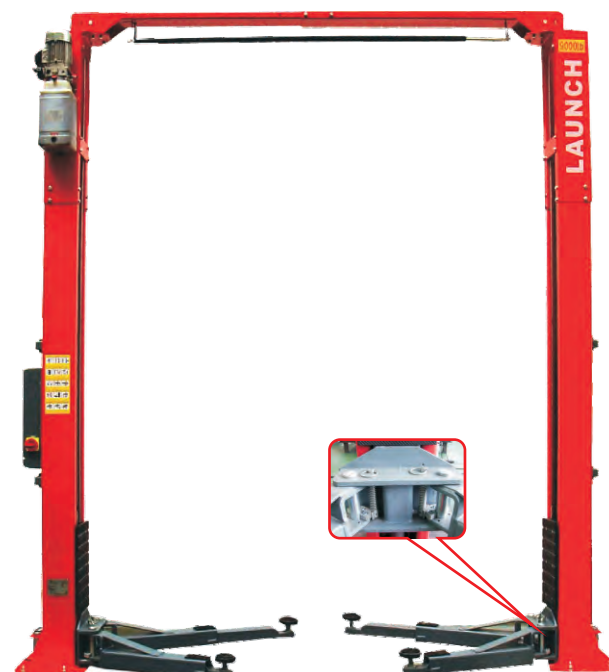


TLT240SCA

Luxurious

Features

- Fully automatic unlocking safety device is adopted for operating only with UP/DOWN button.
- The cable and oil pipe are fully concealed; with decent and elegant appearance.
- Double hydraulic cylinder and high strength chain drive makes stable and smooth lifting and lowering.
- Wire rope equalization system forces synchronous movement of two carriages and effectively prevents vehicle from tilting.
- 24V low voltage control box (IP54 level) ensures operator's safety.
- Cylinder travel limit switch effectively protects cylinder and extends its lifespan.
- Emergency lowering valve can be manually operated to make lift lower safely in case power is off.
- Anti-explosion valve is deployed to make lift slower or stop lowering for the case of oil explosion ,thus protects operator's safety and vehicle not being damaged
- CE-STOP function with safety alarm beep would automatically warn operators to keep safe distance from lift when it lowers to about 250mm high from ground.
- Door rubber pad protects car door from being damaged in collision.
- More lifting pads with different height meets the requirements for light lorries and SUVs.
- Symmetric and asymmetric installation types are optional
- Passed 115% dynamic loading test and 150% static loading test.
- CE certificated.



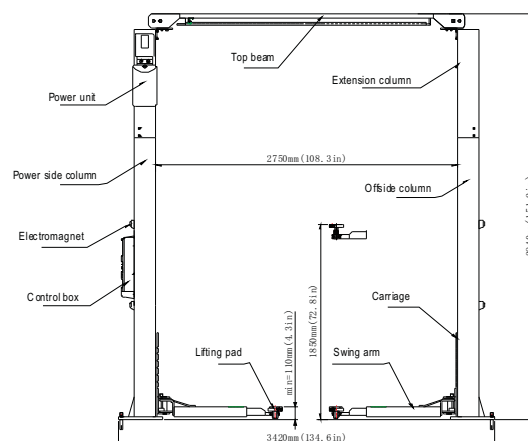
Technical parameters

Rated load:	4000kg
Lifting height:	1850mm
Initial height:	110mm
Lifting time:	≤50s
Lowering time:	≥20s≤40s
Passing width for symmetric installation :	2486mm
Overall width for symmetric installation :	3420mm
Passing width for asymmetric installation :	2415mm
Overall width for asymmetric installation :	3563mm
Overall height:	3840mm
Motor power :	2.2kw
Motor voltage:	3 phase/380v or Single phase/220V
Working noise:	≤75dB (A)
Working oil pressure:	16M Pa

Configuration instructions

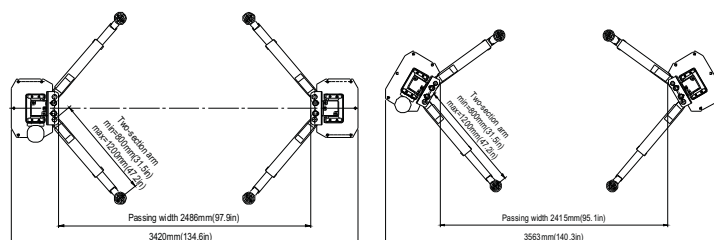
		CE Standard
Swing arm	2stage(800-1200)*4	●
Unlocking system	Full automatic	●
Power unit	Domestic (Overhead) 2.2KW 10L	●
Control box	Full electronic control system	●
Lifting pad	Double screws lifting pad	●
Safety device	CE-STOP,Cylinder travel limit module, anti-explosion valve,Emergency lowering valve	●
Color	Launch red, Launch grey, Volkswagen blue, Hyundai blue, GM blue (Buick blue)	●
Warranty	1year	●

Overall size



Optional parts

90mm square low lifting tray accessory(adjustment range: 25-90mm)	Extension sleeve 90、125、140mm	Asymmetric arm assembly 2stage(855-1365)*2 3stage(600-1000)*2



Symmetric installation

Asymmetric installation